

Authorised Distributors:-

ASH & ALAIN INDIA PVT LTD

S-100, F.I.E.E., Okhla Industrial Area, Phase-ii, New Delhi-110020(India)

Tel : 011-43797575 Fax : 011-43797574 E-mail : sales@ashalain.com

Magnetic Proximity Sensor


GLS

CSM_GLS_DS_E_4_1

Easy-to-use, Simple Magnetic Proximity Sensor

- Permanent magnetic used to operate the reed switch.
- Ideal for detecting opening and closing of doors.



 Be sure to read Safety Precautions on page 2.

Ordering Information

| Name | Model |
|--------|--------|
| Set | GLS-1 |
| Sensor | GLS-S1 |
| Magnet | GLS-M1 |

Ratings and Specifications

| Item | Model | GLS-1 |
|-----------------------------|--------|---|
| Sensing distance | | 15 mm*1 |
| Contact circuit | | SPST-NO |
| Switching capacity*2 | | Maximum operating voltage: 100 VDC Maximum operating current: 0.1 A DC Maximum switching capacity: 10 W (for both open and closed contacts) |
| Contact dielectric strength | | 250 VDC for 1 min with a leakage current of 1 mA max. |
| Response frequency | | 20 Hz max. |
| Ambient temperature range | | Operating/Storage: -20 to 60 °C (with no icing or condensation) |
| Ambient humidity range | | Operating/storage: 35% to 85% (with no condensation) |
| Contact resistance | | 150 m Ω max. |
| Dielectric strength | | 1,000 VAC for 1 min between terminals and case |
| Life expectancy | | 50,000,000 times min. with 0.1-A resistive load at 24 VDC |
| Vibration resistance | | Destruction: 10 to 55 Hz, 1.5-mm double amplitude for 2 hours each in X, Y, and Z directions |
| Shock resistance | | Destruction: 300 m/s ² 3 times each in X, Y, and Z directions |
| Degree of protection | | IP40 (IEC) |
| Connection method | | Terminal block |
| Materials | Sensor | ABS |
| | Magnet | |

*1. Notice that the actual distance is 15 mm min.

*2. AC power cannot be used.

Safety Precautions

Refer to Warranty and Limitations of Liability.

WARNING

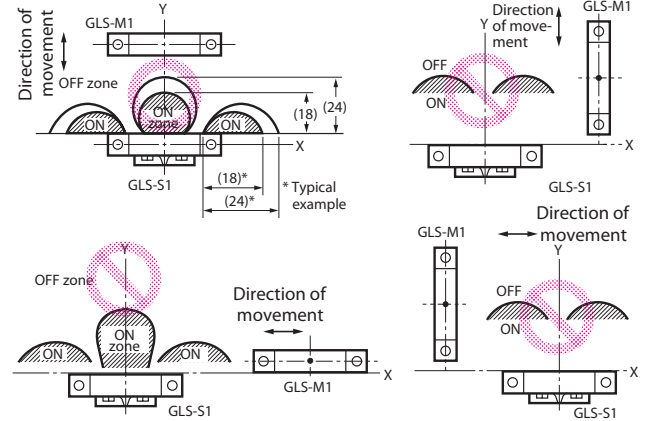
This product is not designed or rated for ensuring safety of persons either directly or indirectly. Do not use it for such purposes.

Precautions for Correct Use

Do not use this product under ambient conditions that exceed the ratings.

● Design

Sensing area



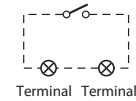
● Mounting

Mounting

The characteristics of the GLS will change if the GLS is mounted to ferrous materials, such as a steel plate.

● Wiring

Internal Wiring Diagram



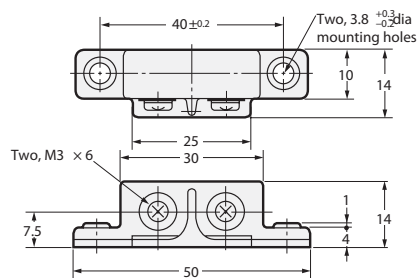
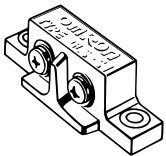
● Miscellaneous

Do not impose excessive shock on the Sensor (e.g., dropping the Sensor from a height of 800 mm or more). Otherwise, the Sensor may malfunction.

Dimensions

(Unit: mm)
Tolerance class IT16 applies to dimensions in this data sheet unless otherwise specified.

Sensor
GLS-S1



Magnet
GLS-M1

